



Jaaco Ballistic Pins & Tools

ICC-ES ESR 2961 OSB to Steel Framing

ICC-ES ESR 2962 Densglass to Steel Framing

Plywood & OSB Densglass to Steel

NPCN-75

Fires
1 1/2" to 3"
Ballistic Pins
(200 Pin Coils)



AS75MW114

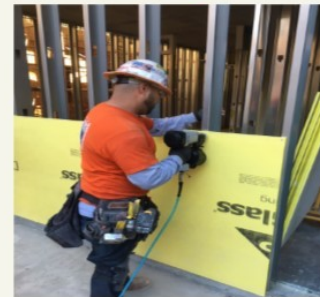
Magnetic Washer
Attachment

200 Pin Coils

MW114
Metal Washers



Lath to Densglass to Steel



Lath & Exterior gypsum to steel framing



NailPro® Ballistic .100 Knurled Shank Coil Pins used 18 - 12 Gage Steel

Applications	Pin Length	300 Head Coil Pins
5/8" OSB to Steel	1 1/2" x .100 Knurled	15112100K300HC
5/8" Densglass® to OSB to Steel	2 1/2" x .100 Knurled	15212100K300HC
5/8" Densglass® to Steel	1 1/2" x .100 Knurled	15112100K300HC
Lath & Mesh to Densglass® to OSB to Steel	1 1/2" x .100 Knurled	15112100K300HC
Hardieplank® to DensGlass® to OSB To Steel	2 1/2" x .100 Knurled	15212100K300HC
7/16" Cement Board to Steel	1 1/2" x .100 Knurled	15112100K300HC

Job site videos

Tools www.NailProTools.com/npcn-75

4 Reasons to switch from Screwdrivers to Air

<https://www.nailprottools.com/single-post/>



Bob Hill—Jaaco/NailPro

Cell: 847-561-4226 Email: bob.jaaco@gmail.com

